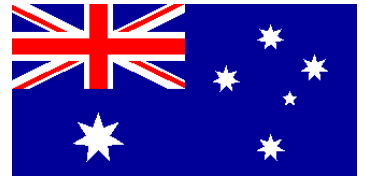


# Australia

## National Flag

When the Australian colonies federated to form the Commonwealth of Australia on 1 January 1901, the Union Jack had been the official flag for 100 years to the day. A new nation raised an urgent demand for a new emblem. An official competition for a design was arranged, which attracted 32,823 entries. Five of these, which contained almost identical designs, were placed equal first. Apart from later changes in the magnitudes of the stars and the number of points, they had produced the present Australian flag. The Australian national flag is the only one to fly over a whole continent. The Australian flag, as we know it today, was set by the Flag Act (1953) signed in 1954 when Queen Elizabeth II visited Australia.



## Coat Of Arms



The first for Australia was granted in 1908. Because the States were not represented, it was changed for the shield to bear the badges of the six States. This was designed and approved in 1912. The new Arms were accompanied by small branches of wattle, ornamental rests for the supporters, and a scroll with the word 'Australia' - none of which are actually mentioned in the 1912 Royal Warrant. The emu and kangaroo were chosen as they both cannot move backwards.



## Emblems

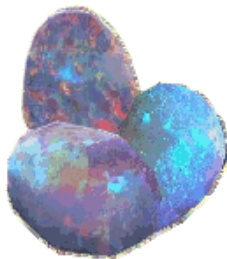
### Golden Wattle (*Acacia pycnantha* Benth)

It was proclaimed the official national floral emblem in August 1988.



### National Gemstone

The Opal was proclaimed Australia's national gemstone on 28 July 1993.



### National Colours

Green and gold were proclaimed Australia's national colours by the Governor-General on 19 April 1984.



Map

Canberra

Capital



Guide Badge



Friendship

For going overseas



Old design for going overseas

